

12th International Cave Bear Symposium



**2-5 November 2006
in Aridéa/Loutrá
District Pella
Macedonia, Greece**

Conference Organizers

School of Geology, Aristotle University of Thessaloniki
Commission for Quaternary research of Austrian Academy of Science
Institute for Palaeontology, University of Vienna

Municipality of Aridea
Prefecture of Pella

Physiographical Museum of Almopia

HELLENIC SPELEOLOGICAL SOCIETY, DEPARTMENT OF NORTHERN GREECE (TOTBE)

Location

The congress will be held in Aridea (Pella District, Macedonia, N. Greece), a small town located 100km to the northwest of Thessaloniki, in the Almopia plain, close to the former Yugoslavian border. Oral and poster presentations will be performed in “Ksenitidion Center” in Aridea town. Accommodation and other activities will take place in the Loutra Aridea’s (spa) area and Loutraki village, 7 km to the west of Aridea, on the slopes of the Voras Mountain.

How to get there

Aridea can be reached using the national road from Thessaloniki to Giannitsa - Aridea town (see map). The trip lasts 90 minutes.

From Italy you can reach Aridea through the “Egnatia” highway. You can follow: Igoumenitsa - Ioannina - Grevena – Kozani - Veria - Naousa –Edessa - Aridea - Loutra. From Bulgaria you can follow: Thessaloniki - Giannitsa - Aridea - Loutra. From Skopje you can follow: the National road to Edessa through Giannitsa. For arrivals by air to the “Macedonia” International Airport of Thessaloniki (airport code SKG) or for arrivals by train to the city’s railway station that is the biggest in Greece and is located very close to the city centre, there will be welcoming at both destinations. After, there will be gathering in the Aristotle University area, in the center of the city, and scheduled departures by buses/cars for Aridea and Loutra.





from F.Y.R.O.M. →

Loutra

Loutra Loutrakiou

Orma

Kato Korfi

Kardia

Panagitsa

Vrita

Zervi

Skopos

1884

1876

1440

Kela

Klidi

Amissa

Messimeri

Flamouri

Ag. Fotini

Gramatikos

Pirgi

Antigonos

Ag. Panteleimonas

Vegara

Filotas

Komnina

Anatoliko

Ag. Hristoforos

Ermakia

Protemaida

Kato Vermio

Koumiana

Xerolivado

21

18

8

Seji

3-5 PIGALIA

2052

Karpenos

Ag. Georgios

Stavros

26

Naoussa

Episkopi

Ag. Panteleimonas

Ag. Panteleimonas

Ag. Panteleimonas

Ag. Panteleimonas

35

Patrida

Fitia

16.5

Ag. Panteleimonas

Ag. Panteleimonas

Ag. Panteleimonas

26

Veria

Meliki

Ag. Varvargi

Ag. Panteleimonas

Ag. Panteleimonas

Ag. Panteleimonas

19

Makrochori

Diavatas

Ag. Panteleimonas

Ag. Panteleimonas

Ag. Panteleimonas

Ag. Panteleimonas

26

Alexandria

Trikala

Maigara

Klidi

Ag. Panteleimonas

Ag. Panteleimonas

12

Egionio

Ag. Panteleimonas

Ag. Panteleimonas

Ag. Panteleimonas

Ag. Panteleimonas

Ag. Panteleimonas

12

Ag. Panteleimonas

Ag. Panteleimonas

Ag. Panteleimonas

Ag. Panteleimonas

Ag. Panteleimonas

Ag. Panteleimonas

12

Accommodation

“Loutra Aridea’s” and the surrounding area of Loutraki village have numerous guesthouses, small hotels and rooms to rent, offering a wide range of accommodation in all categories and costs.

Three possibilities for accommodation are proposed:

1) The near most Hotel “**Filoxenia**”, which is five minutes walking far from the Loutra Aridea’s (spa) area. There are 50 double-bedrooms, the 20 of which are luxurious, with a fireplace that cost 50€, including breakfast. The rest 30 rooms have either one double bed or two single beds and they are at the price of 30€ for one person and at a price of 35€ for two persons, including breakfast. There is an offer proposed for a lunch with an added cost of 6€ per person. Tel.: **+30 2384091095, +30 2384091397**, fax: **+30 2384091075** (no available E-mail). The rooms canceled 10 days before the Symposium date, are without charge; otherwise half of the price have to be paid.

2) In the Loutra Aridea’s (spa) area there are few economical rooms (6€ per person), mainly for students, with a common use WC.

3) There is also the possibility of free camping in a properly prepared area in the Loutra Aridea’s (spa), for those who prefer living in nature.

Furthermore, there are possibilities for accommodation at small hotels and guesthouses, in the village of Loutraki.

A special website for more information is under construction:

<http://www.dimosarideas.gr>, <http://www.pella.gr/infoengl.htm>

<http://www.greekphotobank.gr/thumbnails.php?album=78>

http://www.museumsofmacedonia.gr/Anthropological_and_Nat_History/Laogr_Fys_Loutrakioy_Pella.html

Finally, the organizing committee could arrange accommodation for you.

Climate and Clothing

Weather in the area of Aridea during November is usually changeable. The temperature may range from 9°C during night to ~17°C during the day. The possibility of rain is high. For the spa facilities, your bathing suit is necessary.

Pre-registration

The pre-registration for the congress by the enclosed booking form should be answered before 31/01/06. There is no limit for the participants to attend the excursion.

Conference fees

The conference fee is 25 EUROS. The price includes:

- Entry to all congress presentations
- Refreshments and coffee during breaks on the day of presentations
- Dinner on the opening day, the day of presentations and the closing one
- A complete set of conference literature together with the symposium proceedings
- Coach trip on 4/11/2006

Conference fees are to be paid at the congress office at your arrival.

PRELIMINARY PROGRAM

Thursday, 2/11/2006 – Arrival day

	Gathering at the School of Geology, in the Aristotle University of Thessaloniki - visit at the Paleontological museum, where the famous Petralona hominid skull is exhibited. Scheduled departures for the Loutra Arideas area.
	Spa in the waterfall or the pool
21:30	Welcoming Dinner in the Loutra restaurant.

Friday, 3/11/2006 – Day of presentations

9:00-10:00	Official opening of the congress with welcome by the Mayor of Aridea etc.
10:00 till 19:30	Oral presentations may be given in English, with a time limit of 20 minutes per speaker. Poster presentations will take place in the same building. Detailed program will be announced in the 2 nd circular.
19:30-20:45	Visit to the Municipal Museum of Natural history of Aridea with bear remains from the excavation in the cave.
21:00	Dinner

Saturday, 4/11/2006 – Excursion day in Loutra Aridea's area

9:30 till 14:30	Visit and guiding to the Late Pleistocene site of the Bear-Cave where excavations have been carried out for 15 years with cave-bear and other associated remains. Visit to the unique showing cave of the area (the Varathron pothole), and the Cave B (Antarton cave) with archaeological interest. Secondly, visit to the other small caves of the speleological park of Almopia.
	<i>Speleo-equipment (overall, helmet, torch) is essential.</i>
	Lunch
14.30	Various excursions in the Rema Nicolaou gorge, along the river
15.30	with waterfalls, visit other caves, baths (spa), etc.
20:00	Closing Dinner -traditional music

Sunday, 5/11/2006 – Departure day

9:00	Departure from the Loutra Aridea's by bus Visit the Agios Georgios Cave in Kilkis that is the unique exclusively Latest Pleistocene hyaenid den in Greece. A reception by the Mayor of Kilkis town will be offered.
14:30	Arrival in Thessaloniki

Language

The official language of the symposium will be English. No simultaneous translation will be available.

Abstracts and full papers

All conference presentations will be published in the proceedings of the congress, for the format of which you will be informed in the second circular and for the posters as well. Authors contributing by oral or poster presentation shall provide the conveners with an extended abstract of one to two A4 pages including figures and references. The abstracts will be published, after peer review, in a special volume. The text should be provided as WinWord-file with Arial 11pt font and single spacing between lines. Illustrations should be provided also as a data file (JPEG or TIFF formats). Your extended abstracts should be sent by e-mail to the conference organizer at icbs12th@yahoo.gr, no later than 31 March 2006.

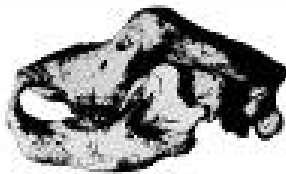
IMPORTANT DATES

- 31 January 2006 advance registration
- 31 March 2006 extended abstracts submission
- 10 September 2006 full papers
- The webpage of the Symposium is under construction
(www.icbs12.geo.auth.gr)

Further information

For all your inquiries contact the conference organizer:

Assist. Professor Evangelia Tsoukala
School of Geology, Aristotle University
54 124 Thessaloniki, GREECE
FAX (0030) 2310 998482
TEL. (0030) 2310 998517
MOBILE (0030) 6977253836
E-mail: icbs12th@yahoo.gr



Pre-registration form
12th International Cave Bear Symposium

Surname:

First name:

Institute:

Address:

Country:

Telephone: **Fax:**

E-mail address:

I wish to participate: **Talk** **Poster**

Preliminary Title of study:

.....
.....
.....

I will attend the excursion: **Yes** **No**

Please return the pre-registration by 31st January 2006 at the latest to:

Ass. Prof. Evangelia Tsoukala
School of Geology, Aristotle University
54 124 Thessaloniki, GREECE
FAX (0030) 2310 998482
TEL. (0030) 2310 998517
MOBILE (0030) 6977253836
E-mail: icbs12th@yahoo.gr